

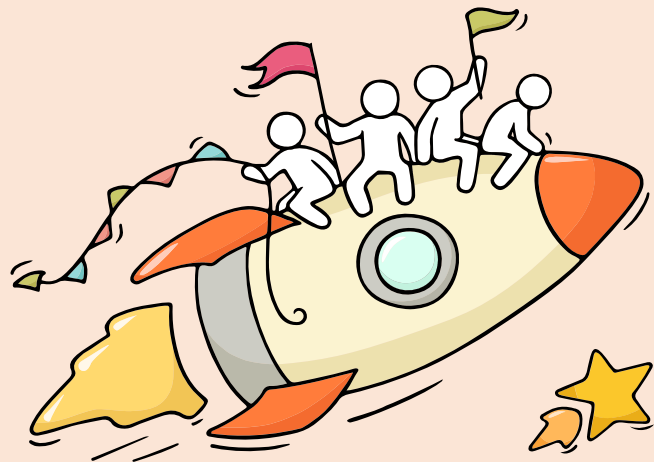
Welcome Back!

Briefing Slides for Release of 2024 GCE O-Level Results



Dear students,

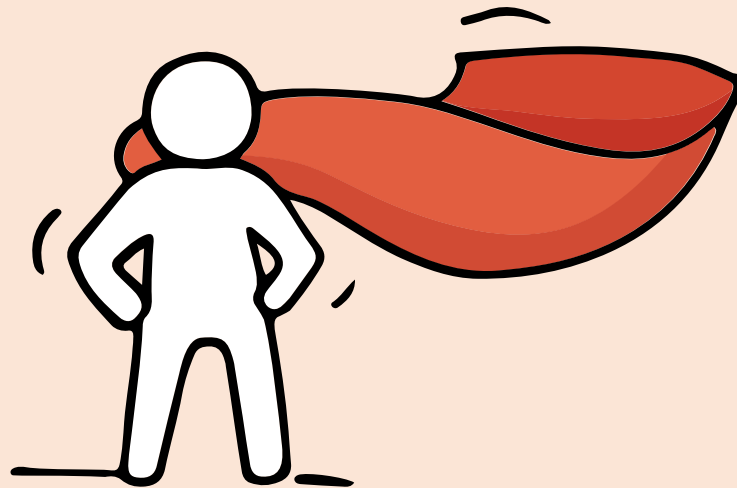
You have worked hard to reach this stage. Let's celebrate our efforts!



Finally, we are about to receive our results!



Remember that while **everyone's educational journey is different, we can each have a fulfilling outcome!**



Resources to support you as you receive your results

Receiving your results and making decisions about your post-secondary pathways can be exciting to some, but stressful to others.

Scan this QR code for an infographic with some helpful resources to support you.



<https://go.gov.sg/olevelstudentresource>



Thinking about Your Next Step?

Consider these questions...

Where do I want to go?

Who am I?

How Do I Get There?



Education & Career Guidance

In the infographic, you can find resources which can help you make informed decisions.

PLANNING YOUR NEXT STEP

These resources will help you chart your path ahead:



• What's Next Brochure
<https://go.gov.sg/whats-next-olevel>



• Contact the ECG Centre @ MOE
<https://go.gov.sg/moe-ecg-centre>

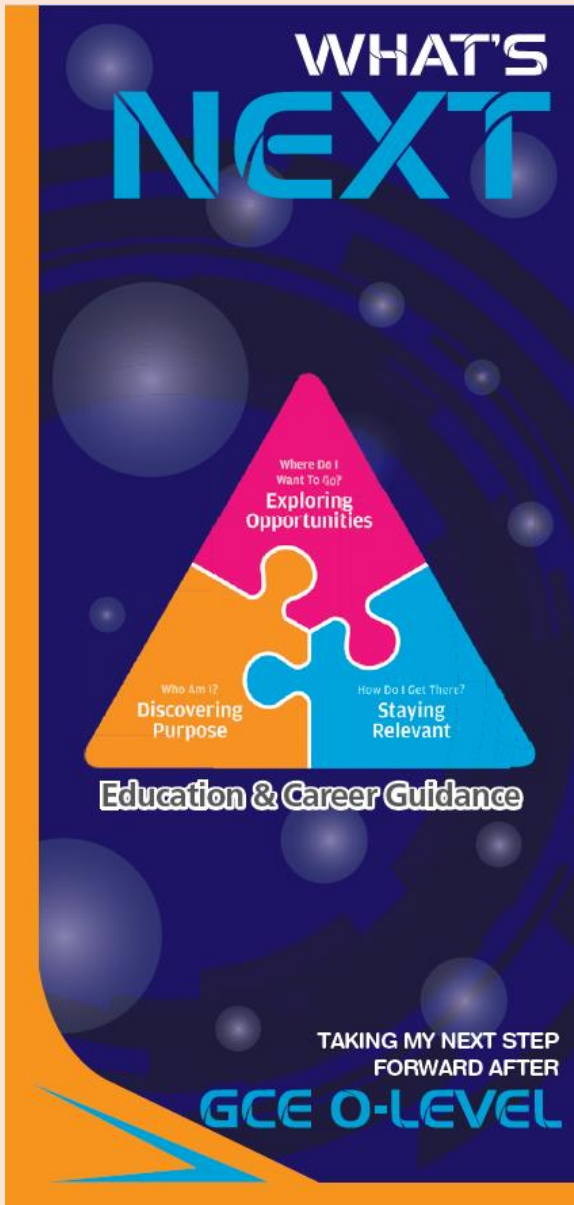


• MySkillsFuture Student Portal
<https://go.gov.sg/MySFSec>



• Chat with your school's ECG Counsellor

Resources to help you make informed decisions



PLANNING YOUR NEXT STEP

These resources will help you chart your path ahead:



- What's Next Brochure

<https://go.gov.sg/whats-next-olevel>



- Contact the ECG Centre @ MOE

<https://go.gov.sg/moe-ecg-centre>



- MySkillsFuture Student Portal

<https://go.gov.sg/MySFSec>



- Chat with your school's ECG Counsellor



MySkillsFuture Student Portal

Use the information and tools to explore various education and career pathways and take charge of your future.

Resources to help you make informed decisions

Information on Post-Secondary Education

Learn more about the admissions exercises and programmes



<https://moe.gov.sg/post-secondary/admissions>

Learn more about the post-secondary education institutions



<https://moe.gov.sg/post-secondary/overview>

About Discover On My Way (D:OMW)

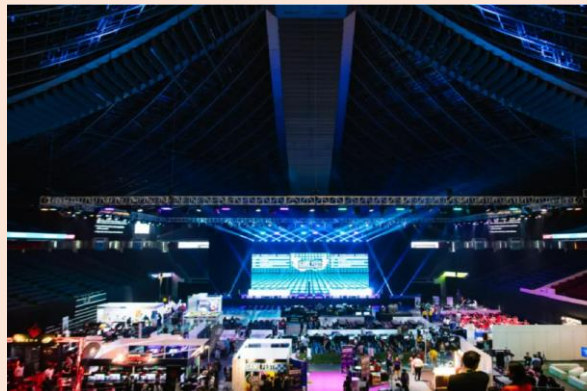
Discover your education and career interests and chart your personal and professional future with **Discover On My Way!** Explore different careers, connect with industry professionals and peers, and get firsthand exposure at various job roles. Let's get you on your way to discovering!

[Join Programmes!](#)

We know – deciding on which course to take and what career to pursue isn't easy... Through programmes organised by NYC and our partners, you'll be able to meet professionals from various industries and youth on the same journey as you.



Outward Bound Job Taster



Esports Events Management Job Taster



Career conversation and discovery



Concerned About Your Next Step?

Stop

- Calm yourself down. Take a few deep breaths.

Think

- Think through the different options that are available for you. Keep things in perspective.
- Remember that the O-Level is not the end point and is only one part of your life journey.

Do

- Have conversations with trusted adults who know you well to advise and guide you (parents, teachers, ECG counsellor).
- Decide and act based on your options.

When you receive your results, you may experience a range of emotions.

Managing these emotions well will allow you to stay calm and make rational decisions.

Reaching out for support is a sign of strength

If you have questions about your options or are not coping well, you can reach out to trusted adults such as a parent/guardian, teacher, school Counsellor or ECG Counsellor. You can also talk to a trusted friend.

*Who can we
go to for ECG
advice?*

Make an appointment to speak with your

ECG Counsellor, Mr Isaac.

Email: ang_zhaoliang@moe.edu.sg

Whatsapp: 6883 6904

OR

Make an ECG counselling appointment via the
ECG Centre @ MOE

<https://go.gov.sg/moe-ecg-centre>



Having difficult emotions during a stressful and uncertain period is normal. Keep a look out for some of these signs:

Keep a lookout for some of these signs in your peers or in yourself

How can we support one another?



**D
I
S
T
R
E
S
S**

Deliberately avoiding others

Increased irritability, restlessness, agitation, stress and anxiety

Sending or posting moody messages on social media

Talking about death or dying

Reacting differently or gradually losing interest in things they used to like

Eating more than usual or having a much reduced appetite

Sleep pattern changes with difficulty falling asleep or oversleeping

Slowing down of energy levels

If you notice any of these signs in yourself or your friends, **have a chat with your School Counsellor or teacher,**

Or contact SOS 24-hour hotline at **1767** or SOS 24-hour CareText Whatsapp at **91511767**
For cyber wellness related matters, call Help123 at **1800-612-3123*** or email **hello@help123.sg**

**available only from Mon to Fri (excluding Public Holidays), from 9am - 6pm.*



Supporting Your Friend

- We may each experience different emotions upon receiving the results.
- You can share your friends' joy by congratulating them or give words of encouragement to friends who may be disappointed with their results.



Keep a lookout for your friends in distress. You can support them in the following ways:



Support is readily available for you.

There are other hotlines and chats available if you are more comfortable seeking help using these platforms. These can also be found in the infographic which you accessed earlier.



<https://go.gov.sg/olevelstudentresource>

SOS provides round-the-clock emotional support for those in distress, thinking of suicide or affected by suicide.

Call: **1767**
(24-hour helpline)

Whatsapp: **9151 1767**
(24-hour Care Text)

TOUCHline is a helpline to provide youths with emotional support and practical advice.

Call: **1800-377 2252**

*Monday- Friday (Excluding Public Holidays):
9am – 6pm*

Community Health Assessment Team

(CHAT) provides personalised and confidential mental health checks and consultation for youths. To speak with a youth support worker, you can:

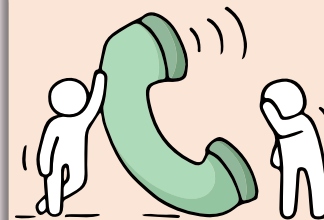
Visit: **CHAT Hub at *Scape, 2 Orchard Link, #04-01A**

Call: **6493 6500/ 6501**

Email: **CHAT@mentalhealth.sg**

mindline.sg is an online platform that provides tools, tips and resources to help you manage your health and well-being. Find out more at:

www.mindline.sg



Carey is an online platform by Care Corner that provides free mental health check-ins with mental health professionals. Find out more at:
<https://carey.carecorner.org.sg/>

eC2 is an e-Counselling Centre where you can talk to a trained counsellor about the issues you are facing, right where you are.

Chat with a counsellor at:

www.ec2.sg

*Monday – Friday (Excluding Public Holidays):
10am – 12pm & 2pm – 5pm*

**The O-Level examination
is not the destination.**

**It is part of your
education journey.**



Details of Admissions Exercises

You can find the details of the various admissions exercises from the **Post-Secondary Admissions Exercises booklet** that can be downloaded from:

<https://www.moe.gov.sg/post-secondary/admissions>

- JAE
- JIE 'O'
- LASALLE
- NAFA



A Guide to

Post-Secondary Admissions Exercises

The various pathways you could explore after secondary school that provide opportunities for continuous learning



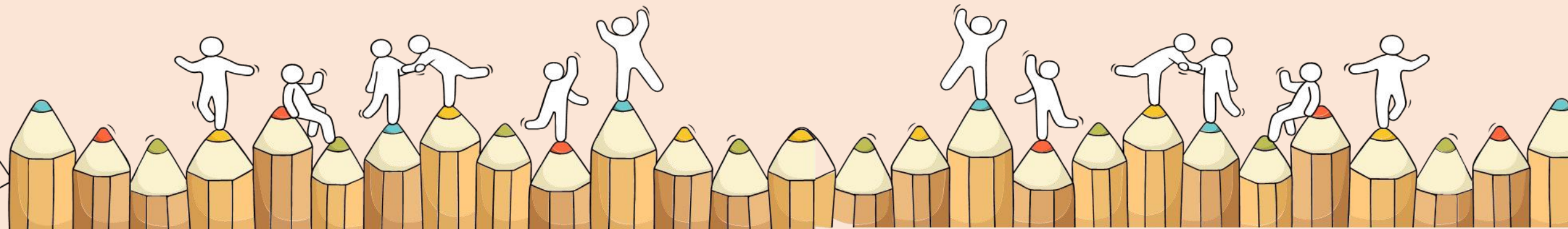
Ministry of Education
SINGAPORE

Application Timeline

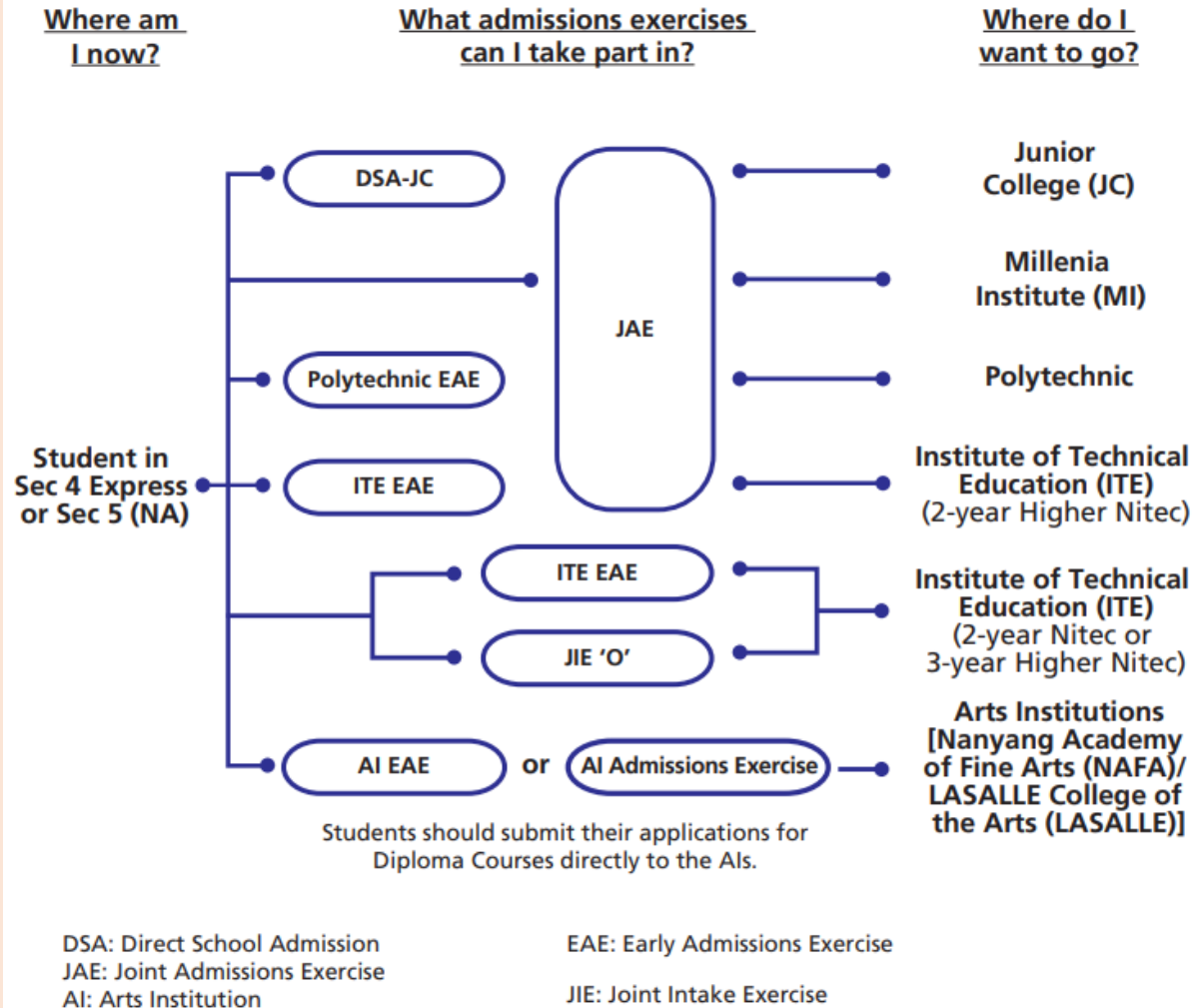
Admissions Exercises	LASALLE NAFA	JAE JIE 'O'
Application Period	Starts Oct 2024	Jan 2025

Admissions Exercises

Things to note



Post-Secondary Admissions Exercises for O-Level Students



<https://www.moe.gov.sg/post-secondary/admissions>

For the list of Nitec/Higher Nitec courses, please visit <https://www.ite.edu.sg/courses/full-time-courses/nitec-and-3-year-higher-nitec> .

Details of Admissions Exercises



JAE – Joint Admissions Exercise

JAE enables GCE O-level holders to apply for courses offered by JCs, MI, polytechnics and ITE (2-year *Higher Nitec* courses).

JAE: <http://go.gov.sg/applyjae>

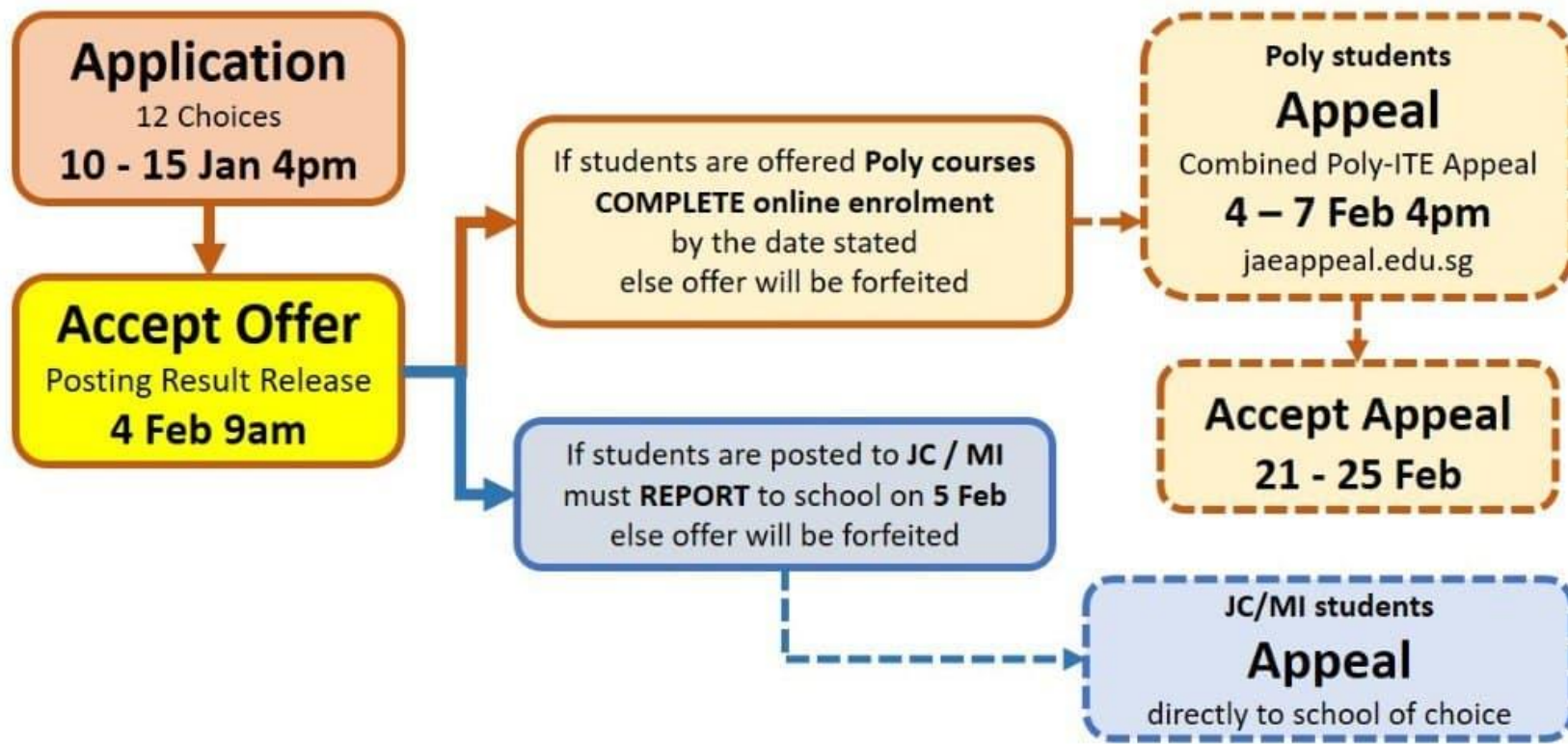


JIE 'O' – Joint Intake Exercise 'O'

The JIE 'O' is conducted to enable GCE O-Level holders to apply for the 2-year *Nitec* or 3-year *Higher Nitec* courses conducted by ITE.

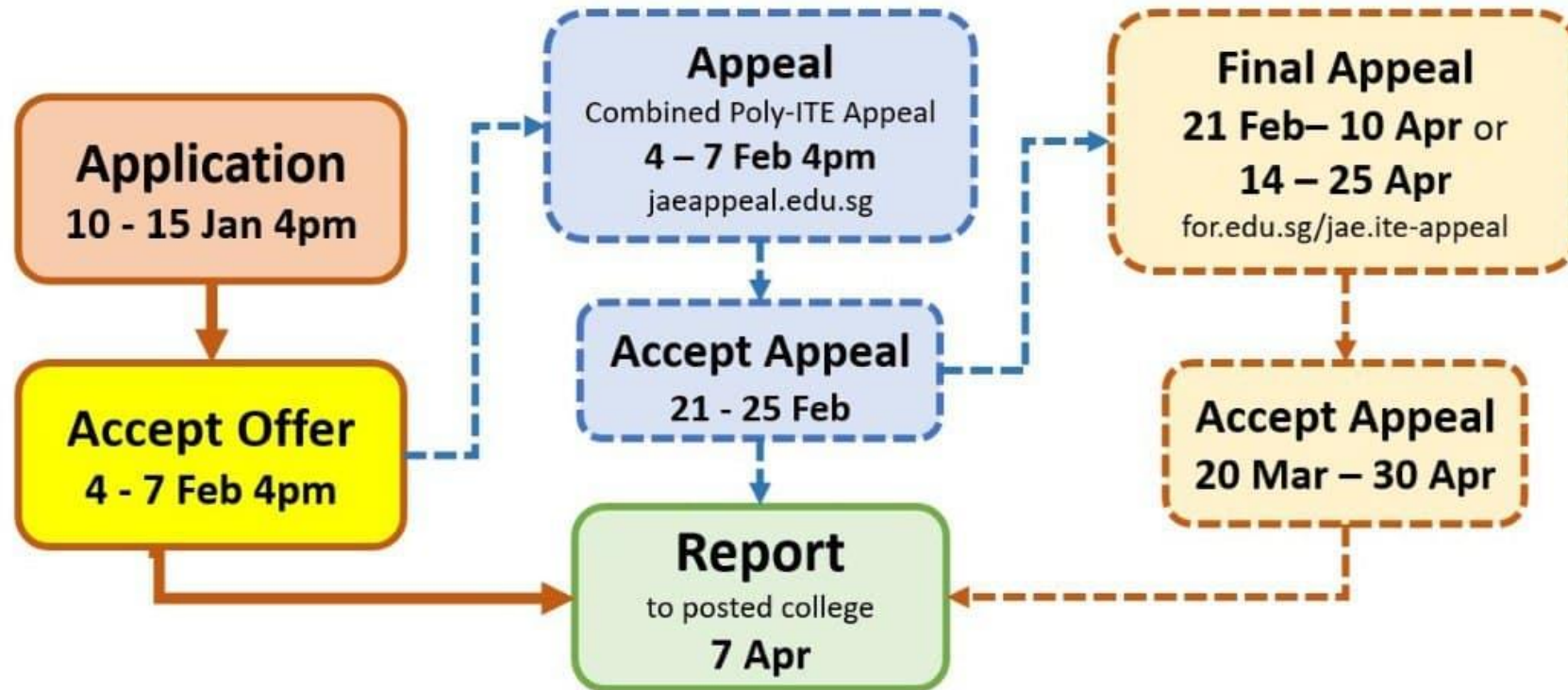
JIE 'O': <https://go.gov.sg/applyjie>

JAE 2025 (JC & Poly) Important Dates



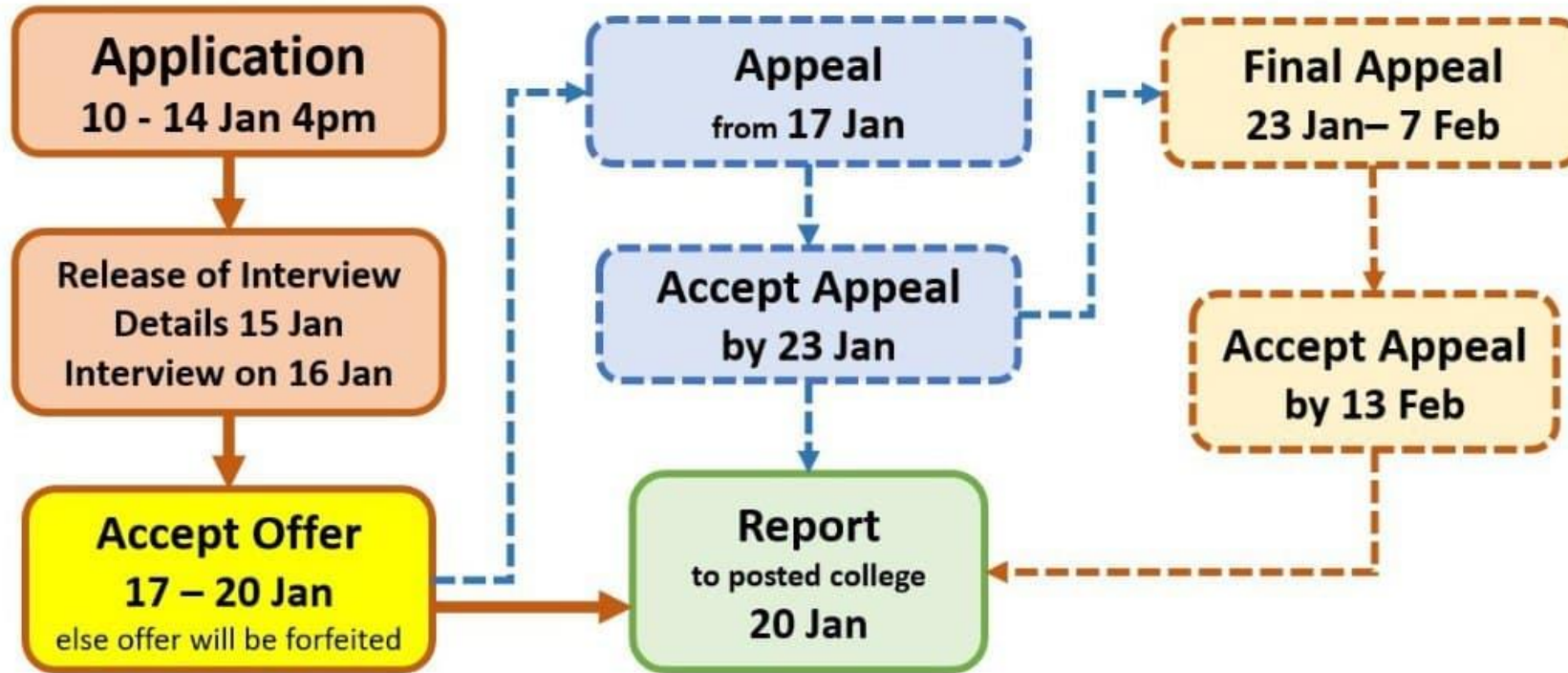
- O-level Result Release **10 Jan 2025**, 2.30pm
- Students posted to JC/MI must report to school on **5 Feb 2024** (and thereafter appeal directly to the preferred JC, if needed).
- Poly & ITE students will be informed by their respective institutions on their enrolment and date to report to school.
- All dates mentioned are accurate at the time of publication. Please visit the JAE website for the latest updates.
- JAE Admission Exercise <https://www.moe.gov.sg/post-secondary/admissions/jae>

JAE 2025 (2-year Higher Nitec) Important Dates



- O-level Result Release **10 Jan 2025**, 2.30pm
- Students are strongly advised to **ACCEPT** the course offered before appealing.
- Students who have accepted the course must report to the posted College on **Mon 7 Apr 2025** at the time indicated in the enrolment letter (and thereafter, continue to appeal, if needed).
- All dates mentioned are accurate at the time of publication. Please visit the ITE website for the latest updates.

JIE-O 2025 (3-year Higher Nitec & 2-year Nitec) Important Dates



- O-level Result Release **10 Jan 2025**, 2.30pm
- Students are strongly advised to **ACCEPT** the course offered before appealing.
- Students who have accepted the course must report to the posted College on **Mon 20 Jan 2025** at the time indicated in the enrolment letter (and thereafter, continue to appeal, if needed).
- All dates mentioned are accurate at the time of publication. Please visit the ITE website for the latest updates.

Details of Admissions Exercises



Arts Institutions - NAFA/LASALLE

GCE O-Level holders with the aptitude and interest to pursue the creative arts at the tertiary level may apply for diploma programmes at the Arts Institutions (AIs). Each AI runs its own admissions exercise, and interested students should apply directly to the institution.

The AIs also run their own Early Admission Exercise, an aptitude-based admissions exercise open to graduating O-Level students, final-year *Nitec* and *Higher Nitec* students from ITE and graduating Integrated Programme (IP) / International Baccalaureate (IB) Year 4 students. This exercise allows students to apply for and receive conditional offers for admission to NAFA and LASALLE prior to receiving their final grades.

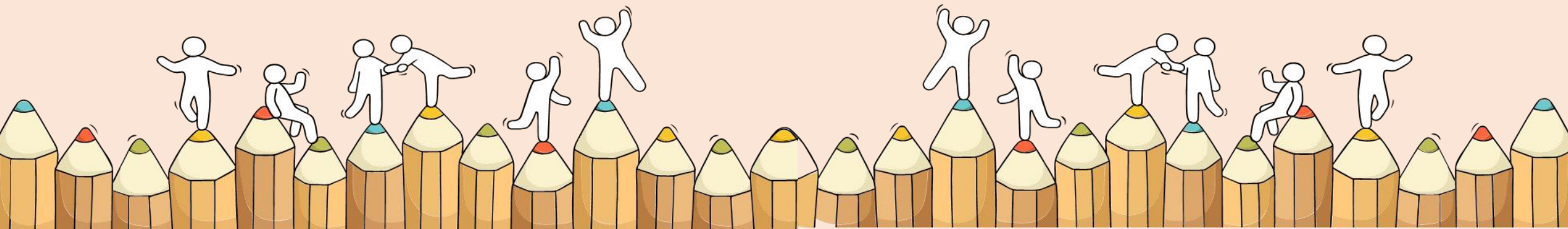
NAFA: <http://go.gov.sg/applynafa>

LASALLE: <https://go.gov.sg/applylasalle>

APPEAL FOR REVIEW OF RESULTS

- Candidates who had sat for 2024 GCE O-Level examination may apply to appeal for a review of their results.
- All appeals by candidates together with the payment of appeal fees must be submitted through schools by Thu, 16 Jan 2025.
- Please contact Mr Yong Eng Kiat (yong_eng_kiat@moe.edu.sg) if you would like to apply to appeal for a review of their results.

For Students Considering Private Education



The 3Rs when deciding on Private Education

Reasons

- Why are you furthering your studies?
- What are the job prospects for your preferred course?

Readiness

- How ready are you to further your studies?
- Can you cope with the academic rigour and assignment deadlines?
- Can you fund your studies?

Risks

- Do you know the possible drawbacks?
 - Your expected returns may not exceed the investments you put into your private education.
 - Private schools may make exaggerated claims.
 - Private schools may close due to various reasons.
 - You may not get a full refund if you withdraw from your course.



8 Things You Should Know Before You Enrol in A Private School



<https://go.gov.sg/choosingapei>



School Registration

Ensure the school is registered with SkillsFuture Singapore (SSG). Review the school's registration period, expiry date and its overall registration track record.



Partner Institution

Research on the partner institution conferring the diploma or degree, and whether the qualification is recognised by the industry.

EduTrust Certification Scheme

Is the school EduTrust-certified*? Under the scheme, private schools are assessed for their performance in areas such as school management and provision of student support services.



**Schools are required to obtain EduTrust certification in order to offer external degree programmes*

School Premises

Head down to the campus ground to check the facilities and support services. Observe the study environment too.



Fee Protection



Ask if there is any course fee protection so that you will be able to recover unconsumed course fees should the school close down.

Beyond Course fees



Find out about the course syllabus and materials, graduation rates and employment prospects. Approach the alumni to find out what they think of the school.

Teachers

Check if the teachers are qualified to teach the course.



Internship

If industry attachment is included, find out which organisation you will be attached to, the period of attachment and the alternative arrangement should the attachment become unavailable. Verify the information with the organisation as well.



Polytechnics' Open Houses

Polys**JCs****Arts
Institutions****Others**

Institution	Date & Time	Website	Highlights
Nanyang Poly	9-11 Jan 2025 Thurs & Sat: 10am to 6pm Fri: 12noon to 10pm	https://openhouse.nyp.edu.sg	Navigators' Fest (on Fri night only) for N- and O-level students on course selection, immersive talks and tours
Ngee Ann Poly	8-11 Jan 2025 10am – 6pm	https://www.np.edu.sg/openhouse	NP Xtra: Diploma + Minor, internships Workshops, campus tours, Personalised Learning Pathway, JAE/PFP Talks
Republic Poly	9-11 Jan 2025 10am – 6pm	https://www.rp.edu.sg/openhouse/	1h, half-day, full-day itineraries available. Designing Your Life Workshop, Hands-on activities (3D Medicine, Drone Soccer)

Polys**JCs****Arts
Institutions****Others**

Institution	Date & Time	Website	Highlights
Singapore Poly	8 Jan 2025 7.15 – 9.15pm 9-11 Jan 2024 10am - 6pm	https://www.sp.edu.sg/spoh25	Discovery Evening (8 Jan), School tours, ECG conversations, CCA performances and tryouts, SP Industry and innovation showcase
Temasek Poly	9-11 Jan 2025 10 Jan Evening Fest: 4.30pm -8.30pm	https://www.tp.edu.sg/openhouse/	JAE/PFP Seminar, Course counselling, school tours Evening Festival

JCs' Open Houses

Polys

JCs

Arts
Institutions

Others

Institution	Date & Time	Website	Highlights
Anderson Serangoon Junior College	14 Jan 2025 10am – 5pm	https://www.asrjc.moe.edu.sg/welcome-to-open-house-2025/	Upper Serangoon Campus tour, ECG talks, subject and CCA booths, lesson samplers, student sharing
Anglo-Chinese Junior College	13 Jan 2025 12.30pm – 5pm	https://www.acjc.moe.edu.sg/events/open-house/	Please check website.
Anglo-Chinese School (Independent)	13 January 2025 10 – 11.30 am	Register via the link below: https://forms.office.com/r/kcCAuBLFv1	The briefing session will share about ACS(I)'s International Baccalaureate (IB) Diploma Programme.

Polys

JCs

Arts
Institutions

Others

Institution	Date & Time	Website	Highlights
Catholic Junior College	11 Jan 2025 10am – 3pm	https://www.cjc.moe.edu.sg/cjc-open-house-2025/	Please check website.
Dunman High School	11 Jan 2025 9 am – 1pm	https://www.dunmanhigh.moe.edu.sg/	Please check website.

DUNMAN HIGH



JAE OPEN HOUSE

11 JAN 2025 (SAT)

0900 - 1300

**Nearest Carpark: Blk 14A
Kampong Arang Road S(432014)**

dunmanhigh.moe.edu.sg



Polys

JCs

Arts
Institutions

Others

Institution	Date & Time	Website	Highlights
Eunoia Junior College	11 Jan 2025 10am – 2pm	https://eunoiajc.moe.edu.sg/oh	Campus tours, A-level curriculum info session, CCA exploration
Hwa Chong Institution (College)	14 Jan 2025 12pm – 4pm	https://hc-oh.com/	Campus tour, Faculty Experiential Hall, CCA booths, talks, Senior-Junior Tea Sessions

OH
EUNOIA!



Eunoia Junior College

OPEN HOUSE

11 Jan 2025

10 am – 2 pm

Discover more at
eunoiajc.moe.edu.sg/oh



Polys

JCs

Arts
Institutions

Others

Institution	Date & Time	Website	Highlights
Jurong Pioneer Junior College	13 Jan 2025 9am – 4pm	https://www.jpjc.moe.edu.sg/about-jpjc/open-house-2025/	MLEP and CLEP Talk, Principal's talk, guided campus tours, subject and CCA booths
Nanyang Junior College	11 Jan 2025 9am – 3pm	https://app.nyjc.edu.sg/openhouse2025/	Campus tours, CCA and Student Interest Groups (SIG) booths and showcase

NANYANG JC OPEN HOUSE 2025

Different Stories One Nanyang

11 Jan 2025

9am - 3pm



nanyangjc.moe.edu.sg



www.facebook.com/Nanyangjc



[heyNanyang](https://www.instagram.com/heyNanyang)



[NanyangJuniorCollegechannel](https://www.youtube.com/NanyangJuniorCollegechannel)

Polys

JCs

Arts
Institutions

Others

Institution	Date & Time	Website	Highlights
National Junior College	11 Jan 2025 10am to 2pm	https://www.nationaljc.moe.edu.sg/2025-njc-open-house/	Subject and CCA booths, Principal's address, interactions with students and teachers
Raffles Institution	14 Jan 2025 10am to 2.30pm	https://www.ri.edu.sg/highlights/story/the-gryphonverse-ri-year-5-6-open-house-2025 https://www.instagram.com/TeamRaffles/	Welcome packs for first 2000 pax. Check Instagram page for updates.



2025

National Junior College

JC Open House


Date: 11 January 2025 (Sat)


Time: 10a.m. to 2p.m.

Location: 37 Hillcrest Road, Singapore 288913

Under the
NJSea

Check us out at our socials!

 @nationaljc

 @nationaljc

 National Junior College Singapore

Website: <https://www.nationaljc.moe.edu.sg/>

14 JANUARY 2025
10AM-2.30PM (Tuesday)

ONE RAFFLES INSTITUTION LANE
SINGAPORE 575954

THE GRYPH UNIVERSE

RAFFLES INSTITUTION (YEAR 5-6) OPEN HOUSE 2025



VISIT
RI'S
WEBSITE:



FOR MORE INFO, VISIT

@TEAM
RAFFLES
ON INSTAGRAM

Polys**JCs****Arts
Institutions****Others**

Institution	Date & Time	Website	Highlights
River Valley High School	13 Jan 2025 2pm – 5pm	https://www.rivervalleyhigh.moe.edu.sg/	School tours, Principal's talk, CCA showcase
St Andrew's Junior College	11 Jan 2025 9am – 3pm	https://www.standrewsjc.moe.edu.sg/open-house-2025/	Shuttle bus service from Potong Pasir MRT Exit C, Dialogue with school leaders, Sample lessons
St. Joseph's Institution (Junior College)	11 Jan 2025 9am – 3pm	www.sji.edu.sg	International Baccalaureate Diploma Programme, SJI experience



**RIVER VALLEY
HIGH SCHOOL**

JC Open House

13 January 2025

Monday

2pm to 5pm

***CCA Showcase,
School Tours & more!***

COME SEE WHAT WE'RE ALL ABOUT!

6 Boon Lay Ave
IG @rivervalleysg

SJI OPEN HOUSE 2025

(FOR JC ADMISSION)

SATURDAY, 11 JANUARY 2025



Additional details about the Open House can be found on SJI's website:

www.sji.edu.sg.

Polys

JCs

Arts
Institutions

Others

Institution	Date & Time	Website	Highlights
Tampines Meridian Junior College	11 Jan 2025 10am – 3pm Principal's talk: 2pm	https://www.tmjc.moe.edu.sg/about-us/open-house/tmjc-open-house-2025/	Academic booths, Principal's talk & sharing by students and alumni, CCA showcase
Temasek Junior College	14 Jan 2025 12.30pm – 4pm	www.temasekjc.moe.edu.sg	New campus at Tampines Campus, "Willing to Act for Society & for Singapore" through subject offerings, enrichment/leadership
Victoria Junior College	11 Jan 2025 9am – 1pm	https://www.victoriajc.moe.edu.sg/2025-openhouse/	Principal's sharing, live performances, Escape Room, Mass Dances

TEMASEK JUNIOR COLLEGE JC OPEN HOUSE 2025

14 JAN 2025, TUESDAY

12:30PM - 4PM

2 TAMPINES AVE 9
SINGAPORE 529564



TEMASEK
JUNIOR COLLEGE

Polys

JCs

Arts
Institutions

Others

Institution	Date & Time	Website	Highlights
Yishun Innova Junior College	13 Jan 2025	https://staging-lite.d2vg23cb9jg5ks.amplifyapp.com/open-house-2025/whats happening/	Please refer to website.
Millennia Institute	14 Jan 2025 12 noon – 5pm Principal's talk: 2pm	https://www.millennia institute.moe.edu.sg/open-house-2025/	Commerce Stream, Academic and CCA booths

Open house


#DOITMIWAY

Principal's Talk
@ 2pm



scan to visit our
school's website!

14 January 2025, Tuesday
12pm - 5pm

 peopleofmillennia



Art Institutions' Open Houses

Polys

JCs

Arts
Institutions

Others

Institution	Date & Time	Website	Highlights
LASALLE College of the Arts	17 Jan 1pm – 6pm 18 Jan 11am – 5pm	https://www.lasalle.edu.sg/experience/open-house-info-days/openhouse	Programme talks, workshops, exhibitions, consultations, alumni mentorship, student exchange programme, application fee waiver
Nanyang Academy of Fine Arts (NAFA)	17-18 Jan 2025 10am – 5pm	https://enrol.nafa.edu.sg/openhouse	Registration needed to attend the OH. Open studios, showcases, Art & Creatives' Market, Portfolio talk, workshops

Others

Polys

JCs

**Arts
Institutions**

Others

Institution	Date & Time	Website	Highlights
Hwa Chong International School (HCIS)	Zoom Only 11 Jan 2025: 10am – 11.30am 14 Jan 2025: 7pm – 8.30pm	Register at: https://forms.gle/cX7FzTz8Lq6944YD6	IB Programme, school curriculum, admission processes, scholarships



Ministry of Education
SINGAPORE